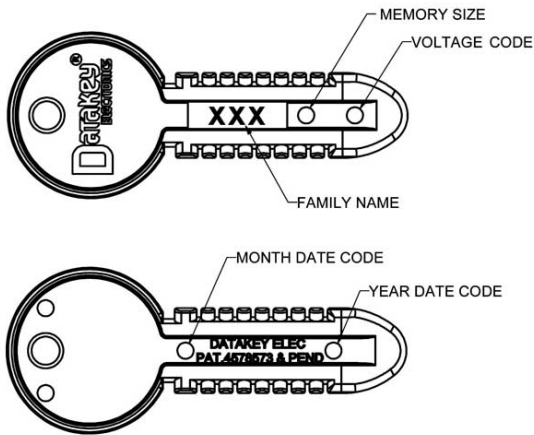
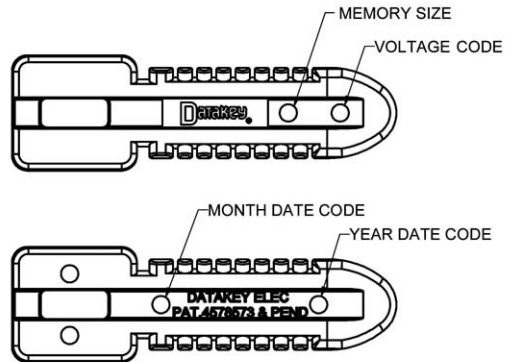


SERIAL KEY & TOKEN IDENTIFIERS

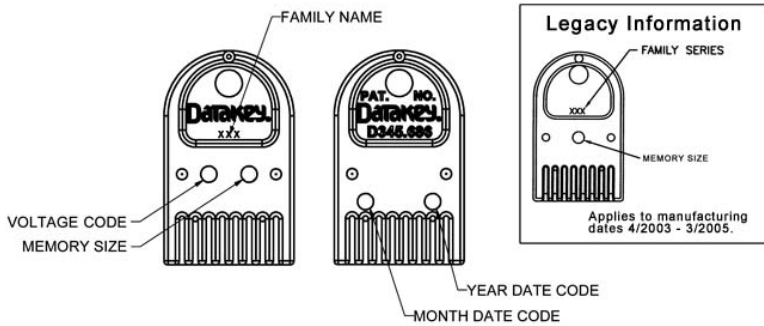
SERIAL KEY MARKING



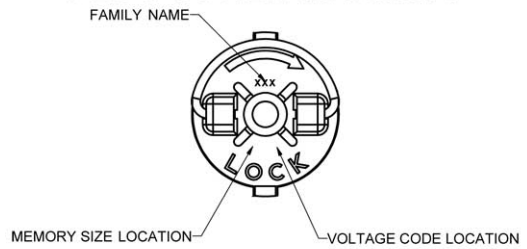
DK SERIAL KEY MARKING



SLIM TOKEN MARKING

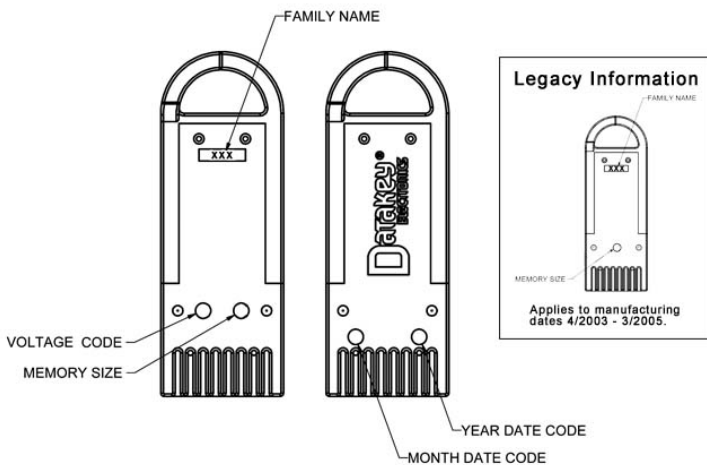


PLUG TOKEN MARKING

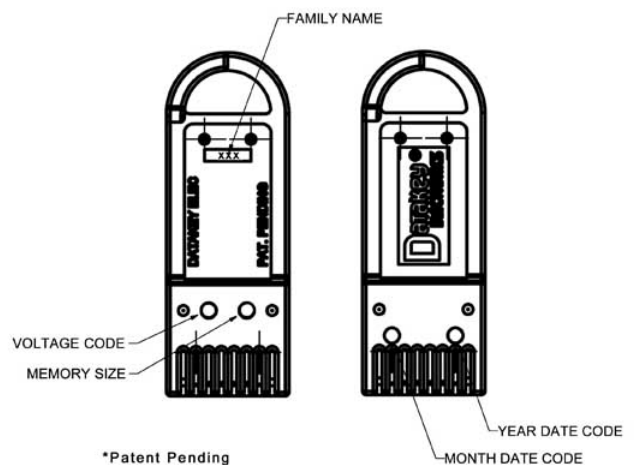


NOTE: Above drawing applies to Gray Top Plugs ONLY. All Black Top Plugs are 1Kb Microwire, consult factory for Voltage information.

EXTENDED SLIM TOKEN MARKING



NFX* SLIM TOKEN MARKING



SERIAL KEY & TOKEN IDENTIFIERS

MEMORY SIZE CODE TABLE		
PIN CODE	SIZE IN BITS	SIZE IN BYTES
A	1K	128
B	2K	256
C	4K	512
D	8K	1KBYTE
E	16K	2 K
F	32K	4 K
G	64K	8 K
H	128K	16 K
I	256K	32 K
J	512K	64 K
K	1MBIT	128 K
L	2M	256 K
M	4M	512 K
N	8M	1MBYTE
O	16M	2M
P	32M	4M
Q	64M	8M
R	128M	16M
S	256M	32M
T	512M	64M
U	1GBIT	128M
V	2G	256M
W	4G	512M
X	8G	1GBYTE
Y	16G	2G
Z	32G	4G

DATE CODE MONTH & YEAR TABLE			
MONTH	CODE	YEAR	CODE
JAN	1	2001	1
FEB	2	2002	2
MAR	3	2003	3
APR	4	2004	4
MAY	5	2005	5
JUN	6	2006	6
JUL	7	2007	7
AUG	8	2008	8
SEP	9	2009	9
OCT	0	2010	0
NOV	N	2011	1
DEC	D	2012	2

VOLTAGE CODE TABLE	
VOLTAGE PIN	VOLTAGE
BLANK	4.5 – 5.5
5	3.0 – 3.6
4	2.7 – 5.5
3	2.7 – 3.6
2	1.8 – 3.6